



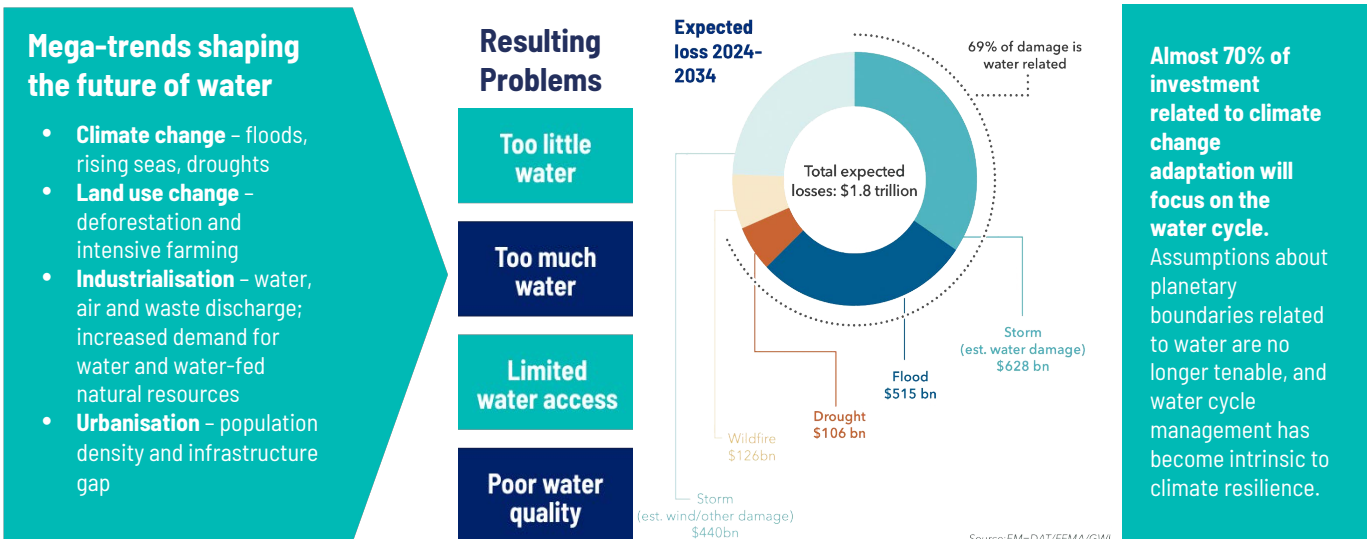
Managed by Wellers iMPACT

OVERVIEW

Water is at a critical juncture. Water Unite Impact is creating stronger and more climate-resilient water and circular economy sectors by providing catalytic growth finance and focused technical assistance to companies in this space. The mission is to connect ground-breaking companies with capital, expertise and networks for substantial growth.

CLIMATE CHANGE: PRIMARILY A WATER CRISIS

Population growth, food/energy security and industrialization are substantially increasing water withdrawals, creating unprecedented stress on water resources. Planetary boundaries around water are at risk of being breached.



THE WATER NEXUS: USD 13 TRILLION INVESTMENT OPPORTUNITY

Water Unite Impact targets water and water-related issues, such as domestic/ industrial water, agri-water, waste and energy. Investing in water will emerge as the biggest global investment theme over the next decade.

Private investment is forecast to grow from \$800 billion to \$6.9 trillion in 2034, a multiple of 8.3x. Total investment will rise from \$4 trillion to \$13 trillion.

Estimated private capital employed in water security over the next decade

| Category | Opportunities | 2024 | 2034 | Multiple |
|----------------------|---|-----------------|-------------------|-------------|
| Infrastructure | Regulated private utilities | \$220 bn | \$800 bn | 3.6x |
| | Project finance in water operating assets | \$100 bn | \$1,000 bn | 10.0x |
| Agri-water | Invest in smart-irrigation Water-efficient Ag equipment, water rights | \$210 bn | \$380 bn | 1.81x |
| Water-tech solutions | Water use reduction Water reuse and recycling Water data measurement and monitoring | \$290 bn | \$1,400 bn | 4.83x |
| Corporate water | Water efficiency in industrial processing Equipment to reduce water footprint Improved wastewater-to-energy | \$1 bn | \$3,200 bn | 3,200x |
| Impact funds | Investment in water-sustainability solutions | \$1 bn | \$100 bn | 100x |
| Total | | \$822 bn | \$6,880 bn | 8.3x |

Water Unite Impact opportunity set

Source: GWI – Investing In A Water-Secure Future

Investment Involves Risk. Wellers Impact Limited is a limited company regulated by the Financial Conduct Authority, and registered in England and Wales with Company Number 9857205.

INVESTMENT APPROACH AND CRITERIA

Water Unite targets high growth businesses creating environmental and social impacts in the Global South.

Since 2021, when the vehicle was launched, over 180 opportunities have been screened and undergone a rigorous selection criteria to ensure quality and value addition of each deal.



WATER+ INVESTMENT THESIS: 5 PILLARS

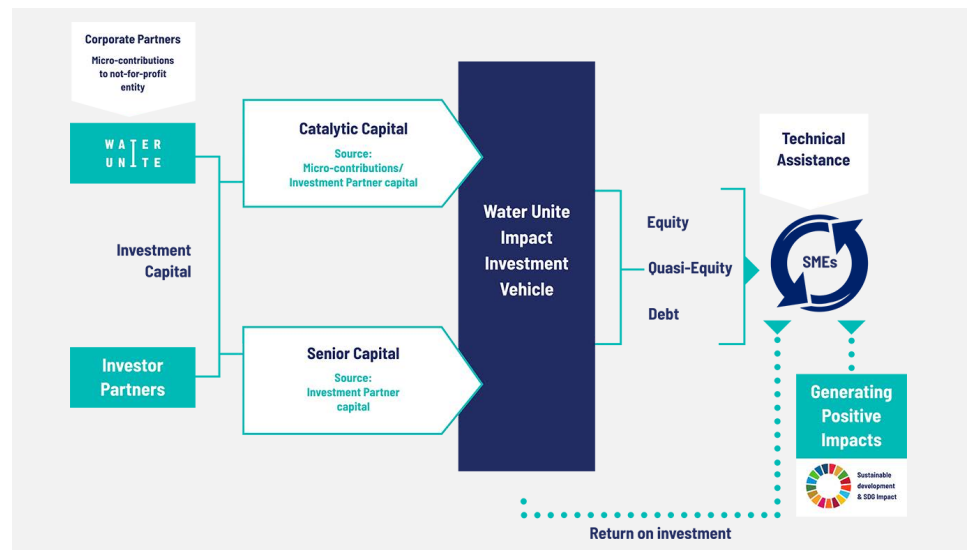
The successful pilot phase of Water Unite Impact created a strong portfolio of assets under management. Commitments have been made to five investees as of the end of 2023 and based on our pipeline this is forecast to grow to a minimum of 14 investments over the lifetime of the fund.



FUND STRUCTURE: BACKED BY GLOBAL CORPORATES AND PATIENT CAPITAL

Water Unite Impact is an innovative blended-finance impact fund supported by first-loss / catalytic donors.

This includes coalition of water-sustainability leaders among global corporates seeking exposure to innovation in water security (water access, water efficiency and water circularity), alongside private investors seeking exposure to investments in water security, including family offices, HNWI, DFIs, corporations, private foundations and fund of funds.



Investment Involves Risk. Wellers Impact Limited is a limited company regulated by the Financial Conduct Authority, and registered in England and Wales with Company Number 9857205.

DISCLAIMER

The information contained in this Document is strictly confidential and intended only for the use of authorised recipients. Recipients of this Document are hereby notified that any photocopying, scanning, reproduction, or distribution - in whole or in part - to others at any time is strictly prohibited without the prior written consent of Wellers Impact Ltd.

This material is for distribution to Professional Clients only, as defined under the Financial Conduct Authority's ("FCA") conduct of business rules, and should not be relied upon by any other persons. Issued by Wellers Impact Limited, which is authorised and regulated in the United Kingdom by the FCA.

An investment in these investments is speculative and involves a high degree of risk. Performance may vary substantially from year to year and even from month to month.

Withdrawals/redemptions and transfers of Interests are restricted. Investors must be prepared to lose their entire investment, and without any ability to redeem or withdraw so as to limit losses.

The investment's investment approach is long-term, investors must expect to be committed to the investment for an extended period of time in order for it to have an optimal chance of achieving its investment objectives.

This Document may not be reproduced in whole or in part, and may not be delivered to any person (other than an authorised recipient's professional advisors under customary undertakings of confidentiality) without the prior written consent of the Investment Manager.

No representation or warranty, express or implied, is or will be made in relation to, and no responsibility or liability is or will be accepted by Wellers Impact Ltd or any of its officers, servants, agents, employees or advisors as to or in relation to the accuracy or completeness of this Document or any further written or oral information made available to the recipient or its advisers. Wellers Impact Ltd expressly disclaims any and all liability which may be based on such information, errors therein or omissions there from. In particular, no representation or warranty is given as to the accuracy of any financial information contained herein or as to the achievability or reasonableness of any forecasts, projections, management targets, prospects or returns. Wellers Impact Ltd is not acting in the capacity of a financial advisor.

In addition, this Document does not constitute an offer and cannot be considered as an offer of, or an invitation to enter into a derivative transaction or subscribe for or to purchase any securities. The information in this Document is in extremely summarised form for convenience of presentation.

Investment Involves Risk. The value of investments, and the income from them, can go down as well as up and an investor may get back less than the amount invested. Past performance is not a guide to future results. Suitable for Sophisticated and High Net Worth Investors only.

Wellers Impact Limited is a limited company regulated by the Financial Conduct Authority, and registered in England and Wales with Company Number 9857205. Wellers Impact Consulting Limited is a limited company, registered in England and Wales with Company Number 10484085. Our FCA Number is 767086.